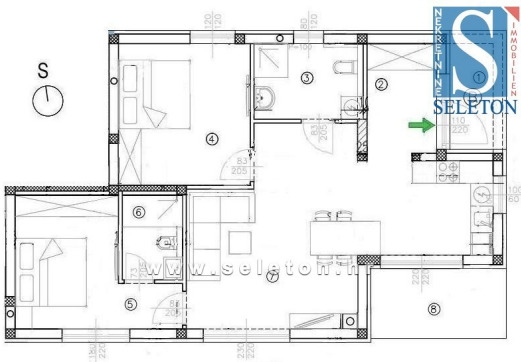
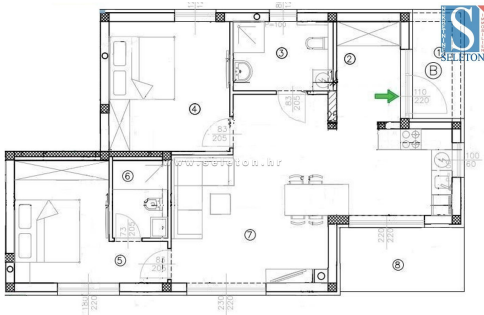




|                               |                  |
|-------------------------------|------------------|
| <b>Object ID :</b>            | 0038             |
| <b>Location :</b>             | Poreč            |
| <b>Building size :</b>        | 76 m2            |
| <b>Garden size :</b>          | 70.00 m2         |
| <b>Distance from center :</b> | 9000 m           |
| <b>Distance from sea :</b>    | 3000 m           |
| <b>Floor :</b>                | Ground floor     |
| <b>Number of floors :</b>     | 3                |
| <b>Number of bedrooms :</b>   | 2                |
| <b>Number of rooms :</b>      | 3                |
| <b>Number of bathrooms :</b>  | 2                |
| <b>Parking :</b>              | Yes              |
| <b>Elevator :</b>             | Yes              |
| <b>Year of construction :</b> | 2025             |
| <b>Energie class :</b>        | A                |
| <b>Condition :</b>            | New construction |

**Price :** 266.945 €



| stan | oznaka                 | dimenzije   | površina                   |
|------|------------------------|-------------|----------------------------|
| 1    | NATKRIVENI ULAZ        | 4,73*0,50   | 2,37m <sup>2</sup>         |
| 2    | ULAZNI HOL             |             | 5,35m <sup>2</sup>         |
| 3    | KUPAONICA              |             | 5,80m <sup>2</sup>         |
| 4    | SPAVAČA SOBA           |             | 13,12m <sup>2</sup>        |
| 5    | SPAVAČA SOBA           |             | 11,80m <sup>2</sup>        |
| 6    | KUPAONICA              |             | 3,60m <sup>2</sup>         |
| 7    | KUHINJA+DNEVNI BORAVAK |             | 30,90m <sup>2</sup>        |
| 8    | TERASA                 | 6,66 * 0,50 | 3,33m <sup>2</sup>         |
|      |                        |             | <b>76,27 m<sup>2</sup></b> |

A new apartment is for sale, with an area of 76.27 m<sup>2</sup>, consisting of a living room, dining room, kitchen, hallway, covered terrace, 2 bedrooms and 2 bathrooms. The apartment is located on the ground floor of the building with an elevator, it has a separate entrance, 2 parking spaces, underfloor heating throughout the apartment, windows with three IZO glasses, mosquito nets on the windows, preparation for air conditioning and a private garden of approx. 70 m<sup>2</sup>. The apartment is about 3 km from the sea and 9 km from the center of Poreč, in the village there are restaurants, cafes, a pharmacy and a supermarket.

REMARK:The property is included in the VAT system, so the buyer does not pay the 3% tax on the acquisition of the property.

NOTICE:Dear clients,the property can be viewed exclusively with a signed Brokerage Agreement, which is the basis for further actions related to the purchase and the payment of the commission, all in accordance with the Act on Real Estate Brokerage.In case you decide to purchase the property, the agency commission is 3% + VAT, payable at the time of signing the Preliminary Agreement or the Sale and Purchase Agreement.We are not responsible for possible errors in property descriptions, though we strive to be as precise and accurate as possible.Photos, videos, computer visualizations (renderings) and floor plans are illustrative in nature and may not fully correspond to the actual or final condition of the property.Buyers are advised to inspect the property in person before making a final decision.